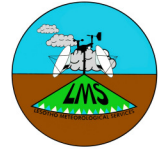




# LESOTHO METEOROLOGICAL SERVICES

*We are at your service. Re sebelise*



Agro-Met Monthly Update:

April 2010

Date of issue: May 2010

## Highlights

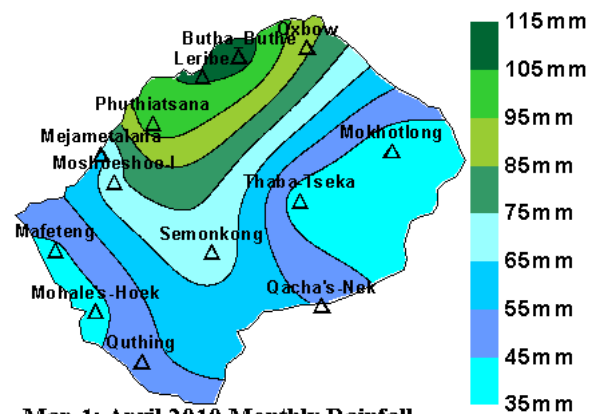
1. Below normal monthly rainfall experienced at most places
2. Below mean monthly temperatures experienced
3. Crops matured
4. Below normal to normal winter rainfall forecasted
5. Normal to above normal winter temperatures forecasted

## Rainfall

### *Monthly Actual Rainfall*

Weather during the month of April 2010 was generally dry. However, some places recorded above normal monthly rainfall, those are Butha-Buthe, Phuthiatsana and Semonkong. Mafeteng, Mohale's Hoek and Quthing recorded below normal monthly rainfall, the rest of the places recorded normal rainfall for the month. (See Map 1 & Figure 1).

Lowest and highest recorded monthly rainfall range from 37.1mm at Mokhotlong to 111.1mm at Butha-Buthe. Rain days range from the lowest five days at Qacha's Nek to the highest ten days at Butha-Buthe

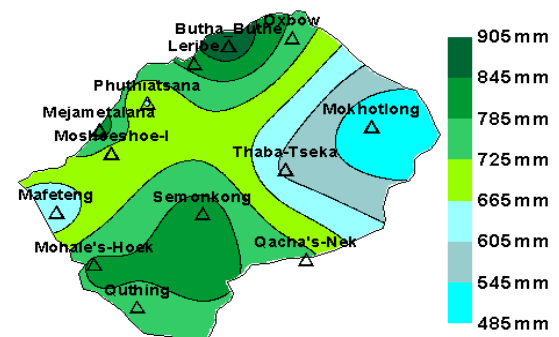


Map 1: April 2010 Monthly Rainfall

### *Cumulative Rainfall since September 2007*

Cumulative rainfall since September 2009 remains normal at most places. It is above normal at Maseru, Mohale's Hoek and Semonkong.

Map 2 depicts actual accumulated rainfall since September 2007 to the end of April 2008. Butha-Buthe has accumulated highest rainfall amount of 902.5mm while areas around Mokhotlong has recorded lowest rainfall amount of 488.1mm.



Map 2: Cumulative Rainfall (Sep 2009 - Apr 2010)

### Temperatures

Month of April recorded normal mean monthly temperatures in many places. Temperatures during the early days of the third dekad of April caused frost occurrence in all parts of the country.

Highest and lowest mean monthly temperature deviations were 1.2°C and -4.2°C at Maseru and Mokhotlong respectively.

### Crop Stage and Conditions

Most maize and sorghum crops had matured when frost came during the early days of the last dekad of April. However, there were some crops which had not matured at the time and they were

therefore destroyed. Conditions of those crops which had matured ranged from fair to good.

### Weather Outlook (May – July 2010)

During the last cropping season (September 2009 – April 2010) the country received good rains where normal to above normal rainfall was experienced countrywide.

Compared to the previous winter season May-July 2009 where above normal to normal rainfall was observed, this winter season May-July 2010, below normal to normal rainfall is anticipated. The region (shown as REGION1 in Figure 2) that covers the northern lowlands of Leribe and Buthe-Buthe including the highlands of Thaba-Tseka, Mokhotlong and the eastern parts of Qacha's Nek are likely to receive below normal to normal winter rainfall. The rest of the region (shown as REGION2 in Figure 2) covering

the lowlands of Berea, Maseru, Mafeteng, Mohale's Hoek and Quthing including the highlands of Semonkong and the western parts of Qacha's Nek is likely to receive normal to below normal winter rainfall. Moreover, it is forecast that normal to above normal winter temperatures are likely to be experienced during this period.

The winter crops such as wheat and peas are less likely to be affected by the above rainfall situation as occasional passage of cold fronts will result in moisture supply enough to sustain agricultural activities.

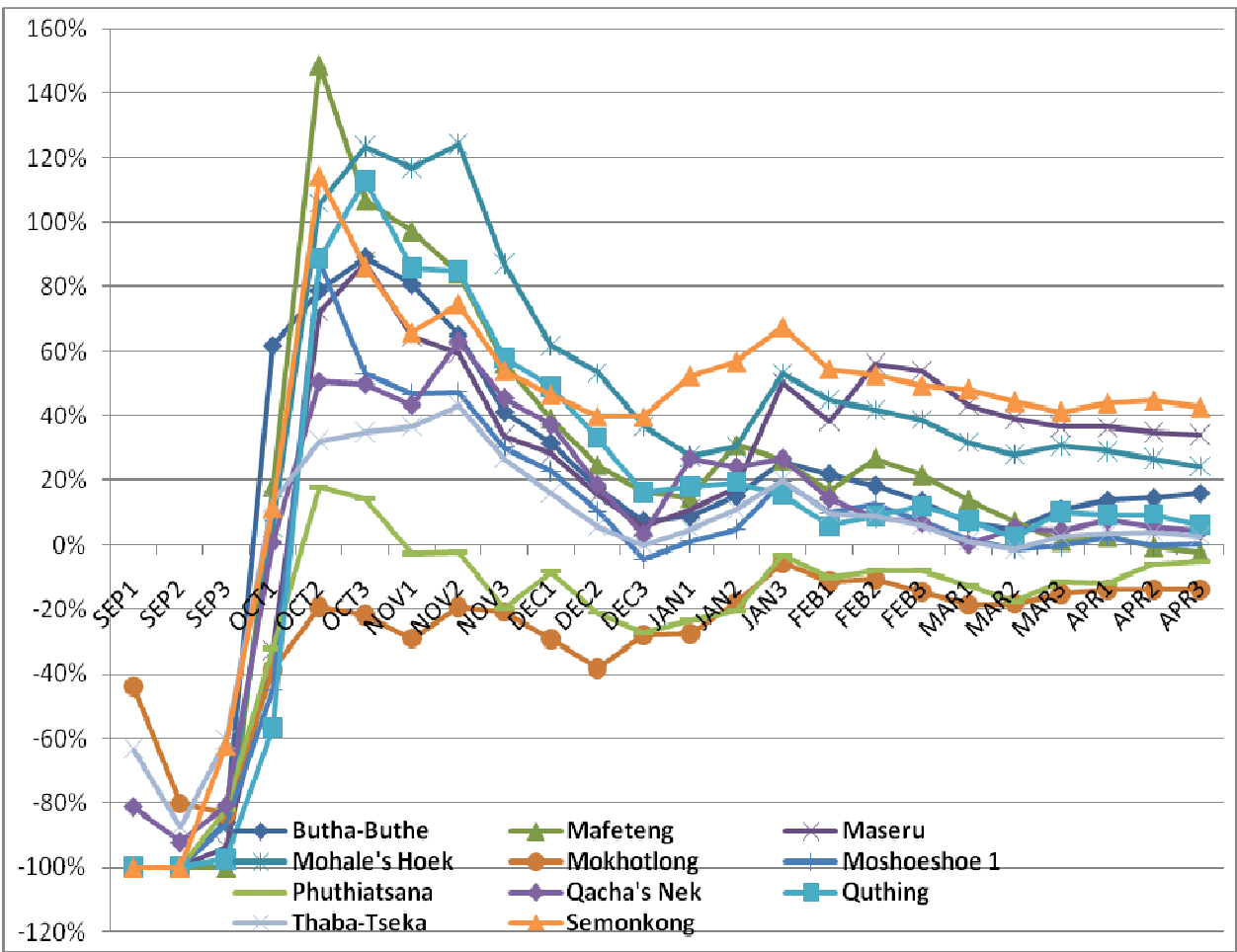


Figure 1: Rainfall % Departure from since September 2009

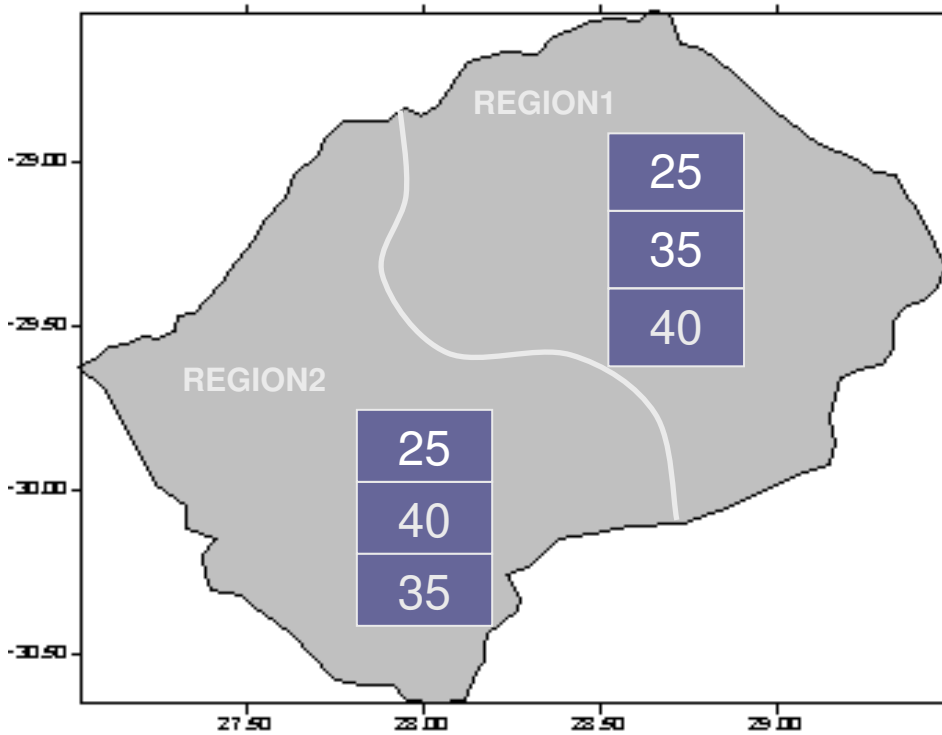


Figure 2: May - June Forecast